



10 μ m

Mag = 6.00 K X

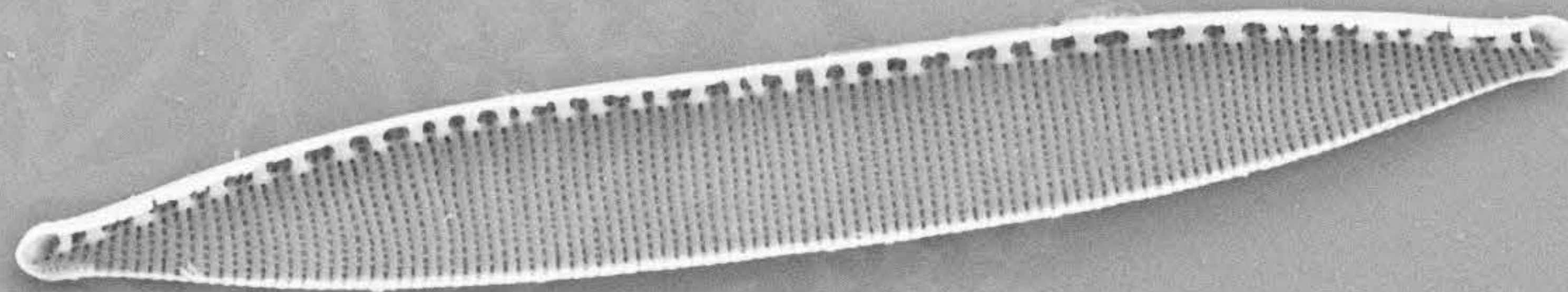
EHT = 5.00 kV Signal A = SE2

Date :23 Oct 2013

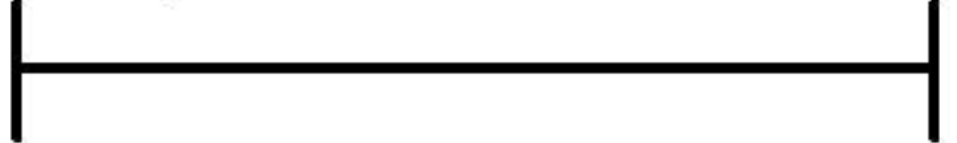
WD = 5 mm

File Name = DM1011_01.tif





10 μ m



Mag = 6.00 K X

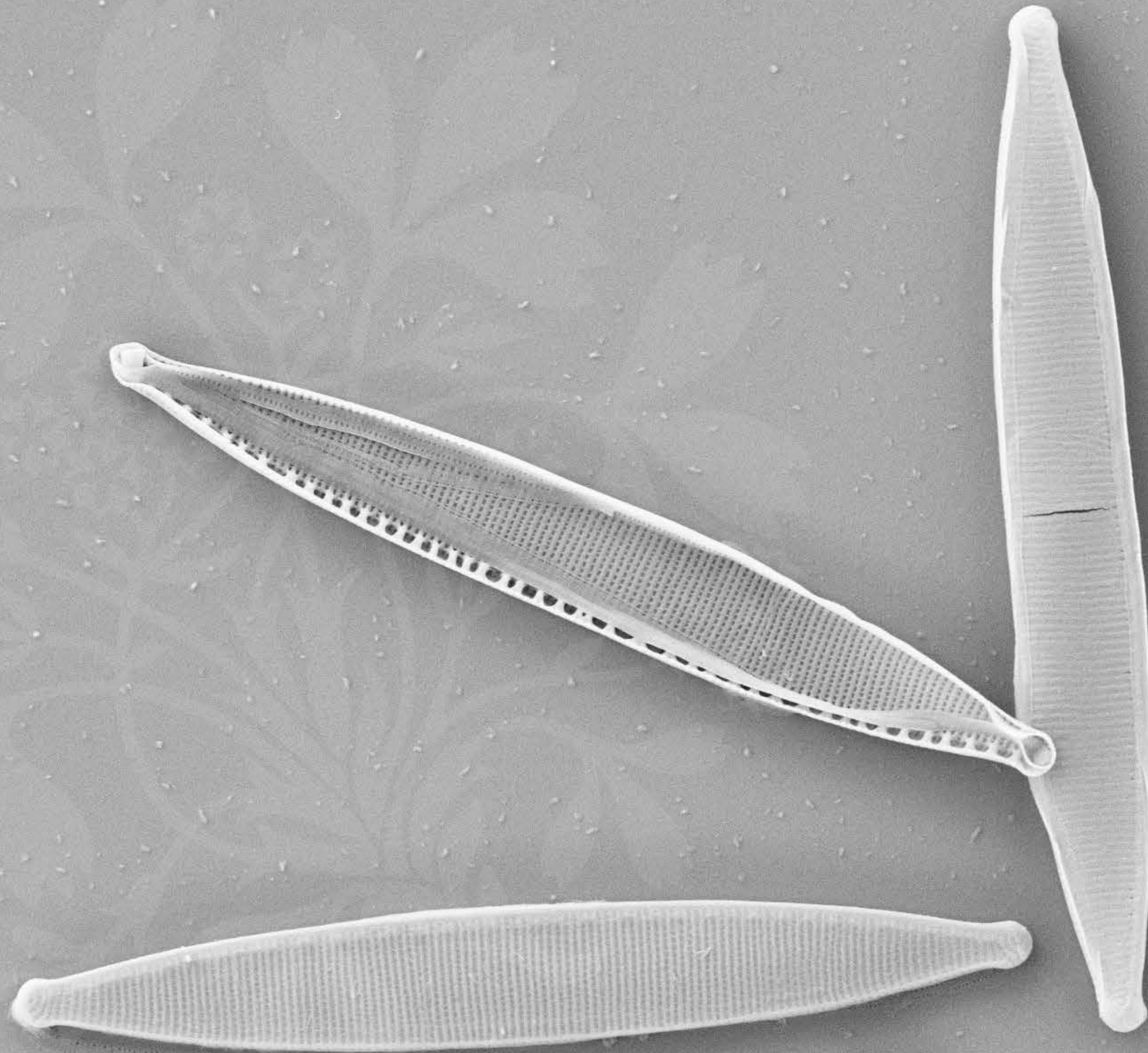
WD = 5 mm

EHT = 5.00 kV Signal A = SE2

File Name = DM1011_02.tif

Date :23 Oct 2013





10 μ m

Mag = 6.00 K X

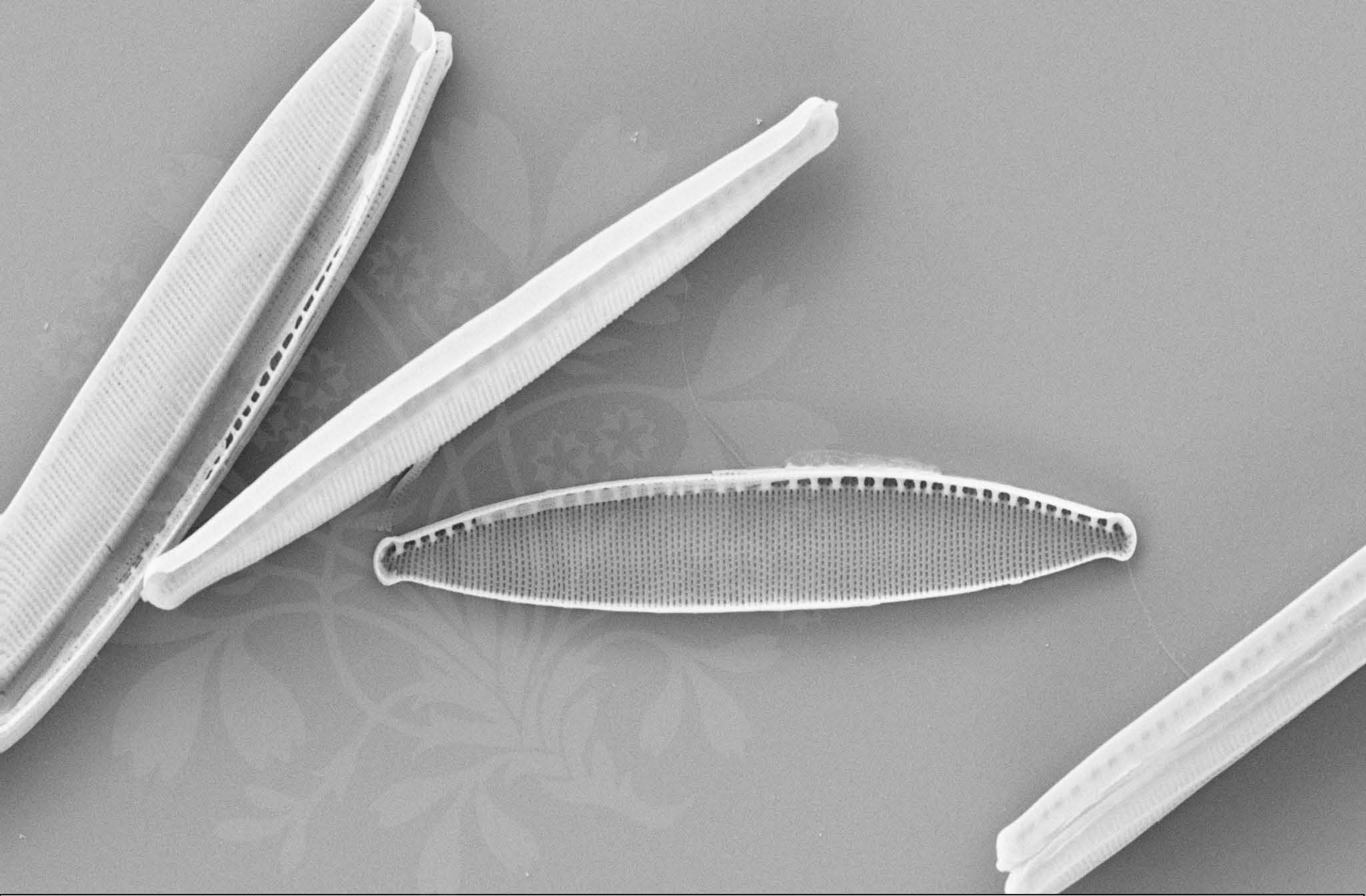
EHT = 5.00 kV Signal A = SE2

Date :23 Oct 2013

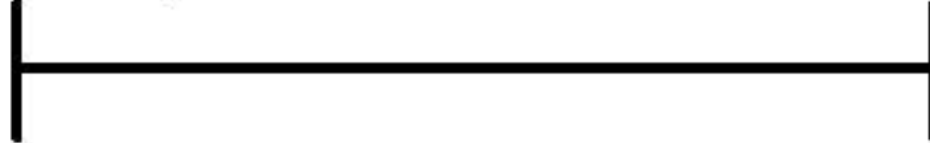
WD = 5 mm

File Name = DM1011_03.tif





10 μ m



Mag = 6.00 K X

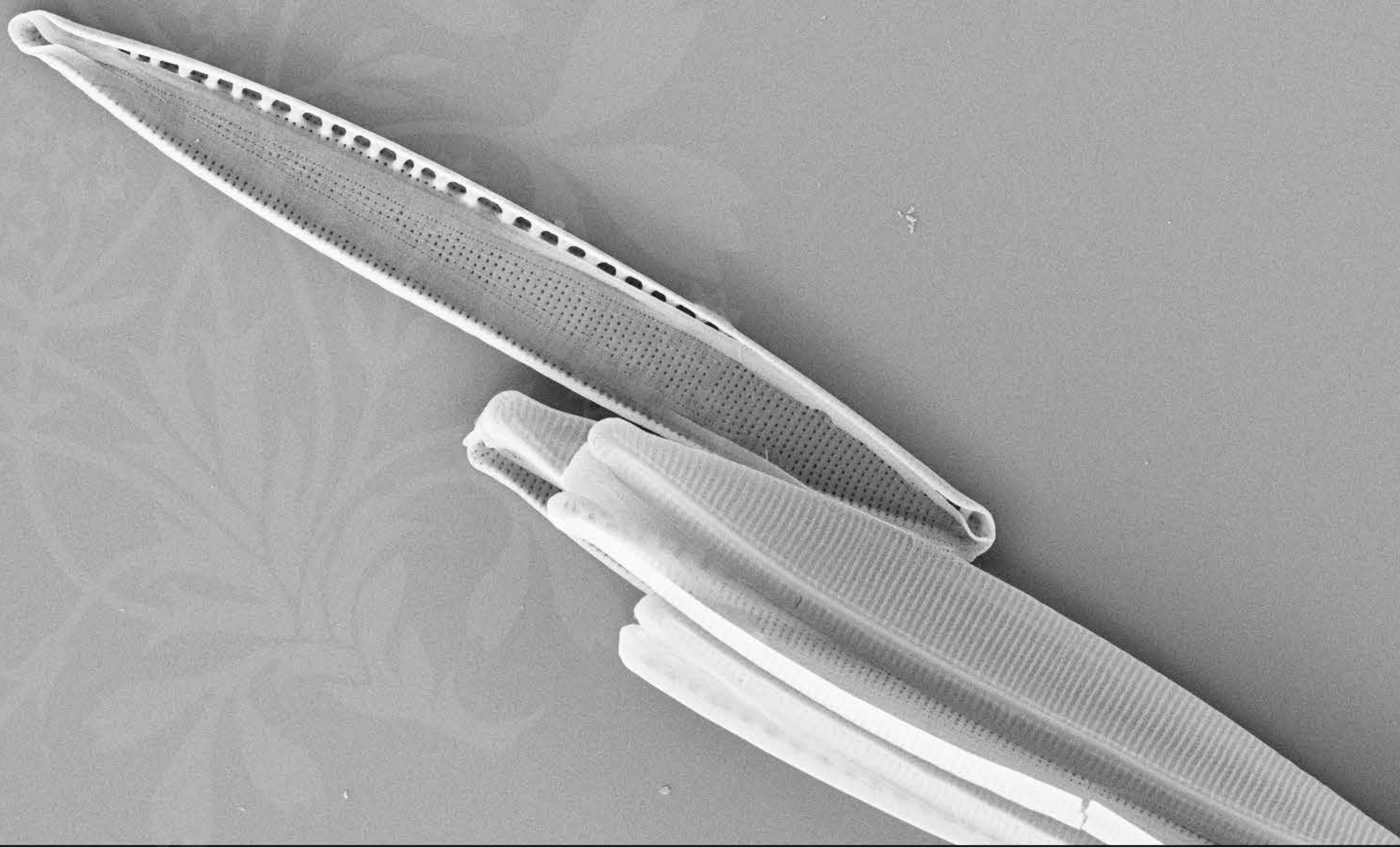
WD = 5 mm

EHT = 5.00 kV Signal A = SE2

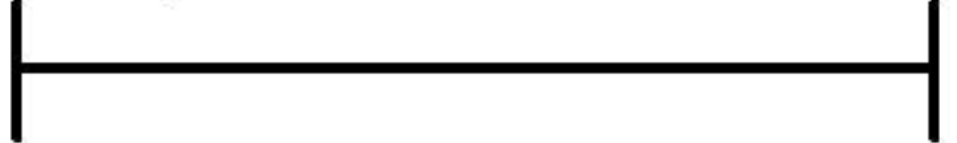
File Name = DM1011_04.tif

Date :23 Oct 2013





10 μ m



Mag = 6.00 K X

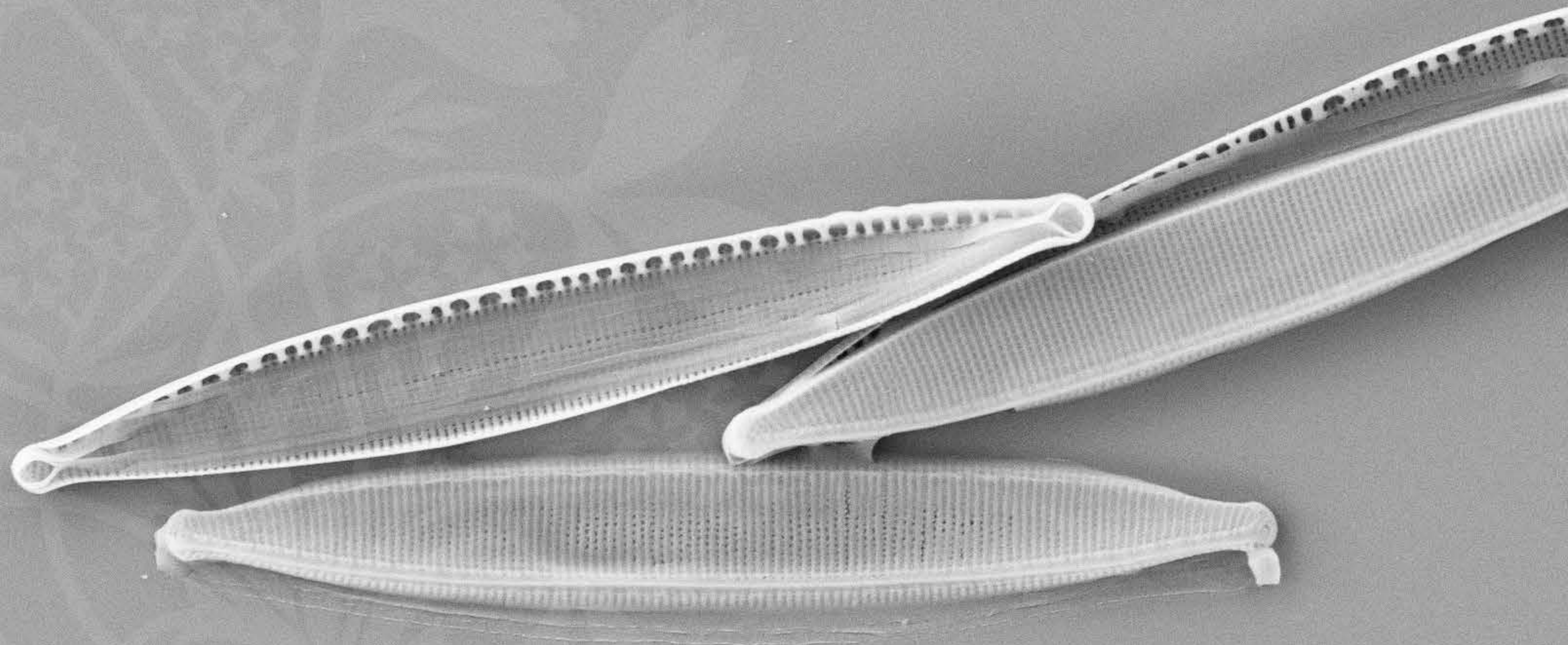
WD = 5 mm

EHT = 5.00 kV Signal A = SE2

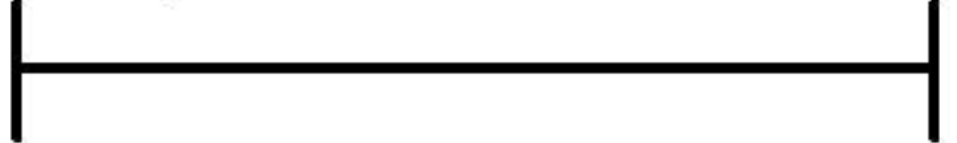
File Name = DM1011_05.tif

Date :23 Oct 2013





10 μ m



Mag = 6.00 K X

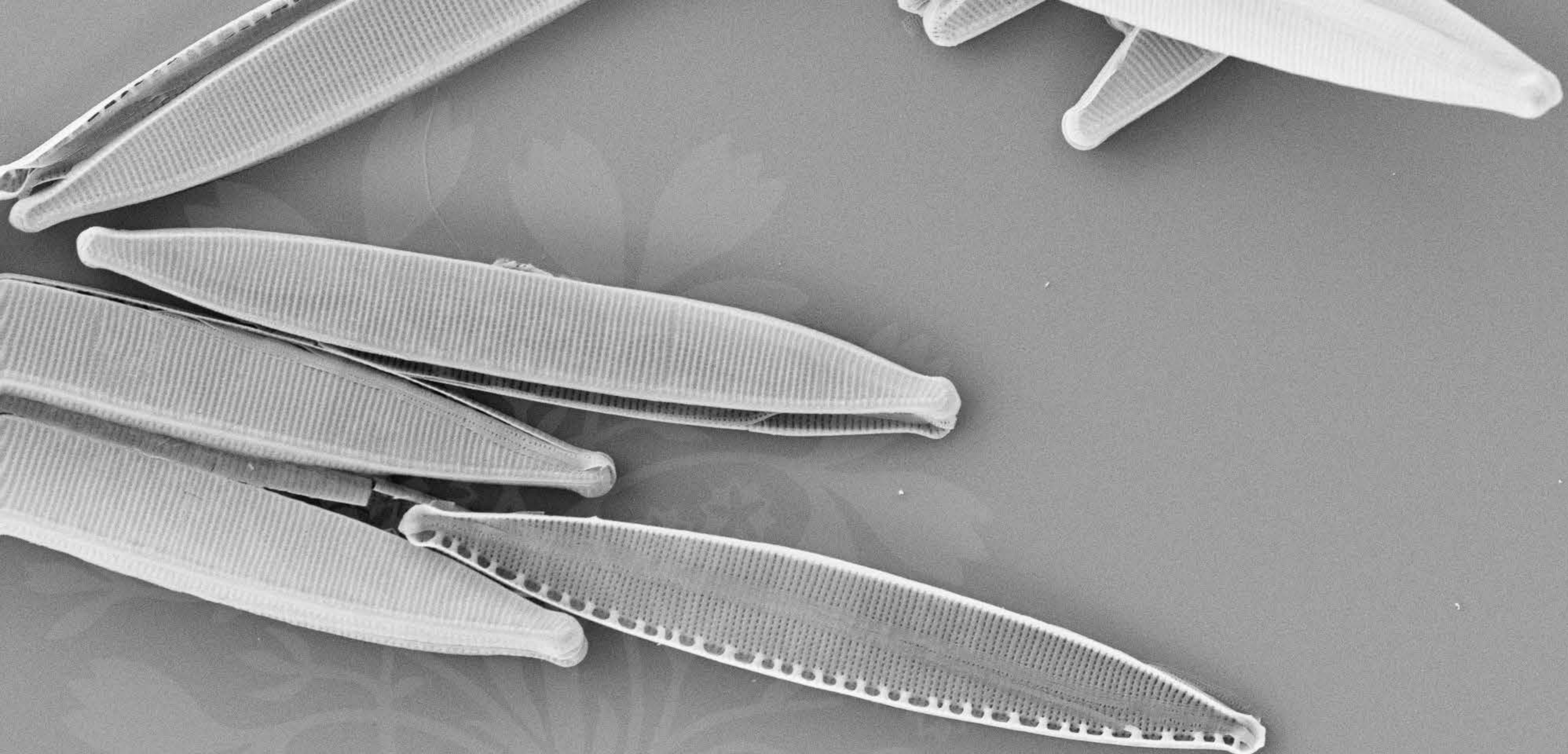
WD = 5 mm

EHT = 5.00 kV Signal A = SE2

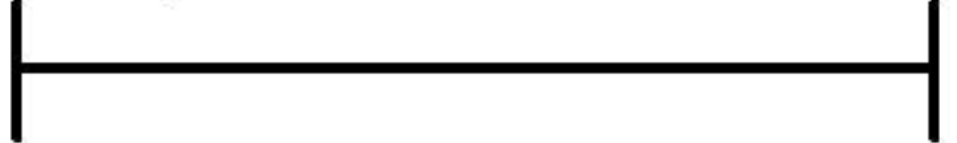
File Name = DM1011_06.tif

Date :23 Oct 2013





10 μ m



Mag = 6.00 K X

WD = 5 mm

EHT = 5.00 kV Signal A = SE2

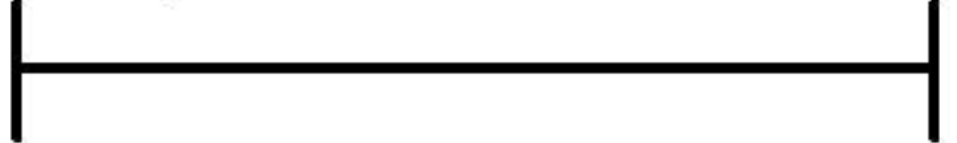
File Name = DM1011_07.tif

Date :23 Oct 2013





10 μ m



Mag = 6.00 K X

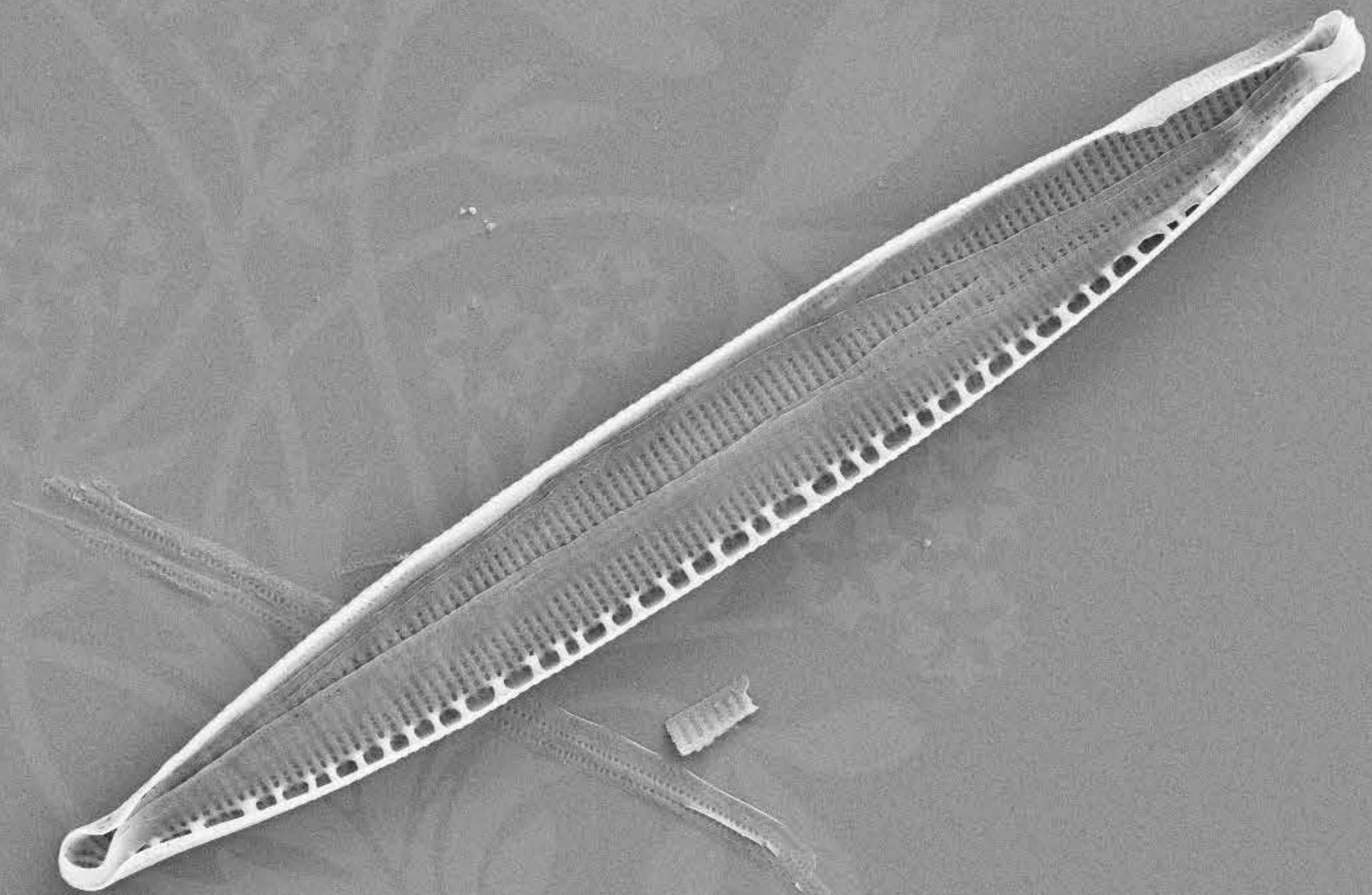
WD = 4 mm

EHT = 5.00 kV Signal A = SE2

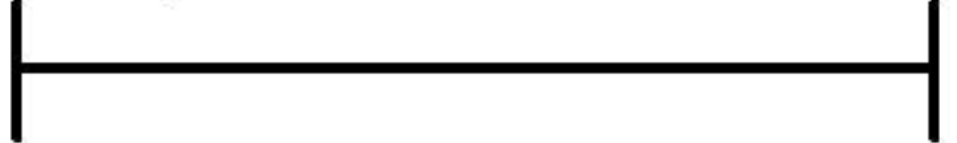
File Name = DM1011_08.tif

Date :23 Oct 2013





10 μ m



Mag = 6.00 K X

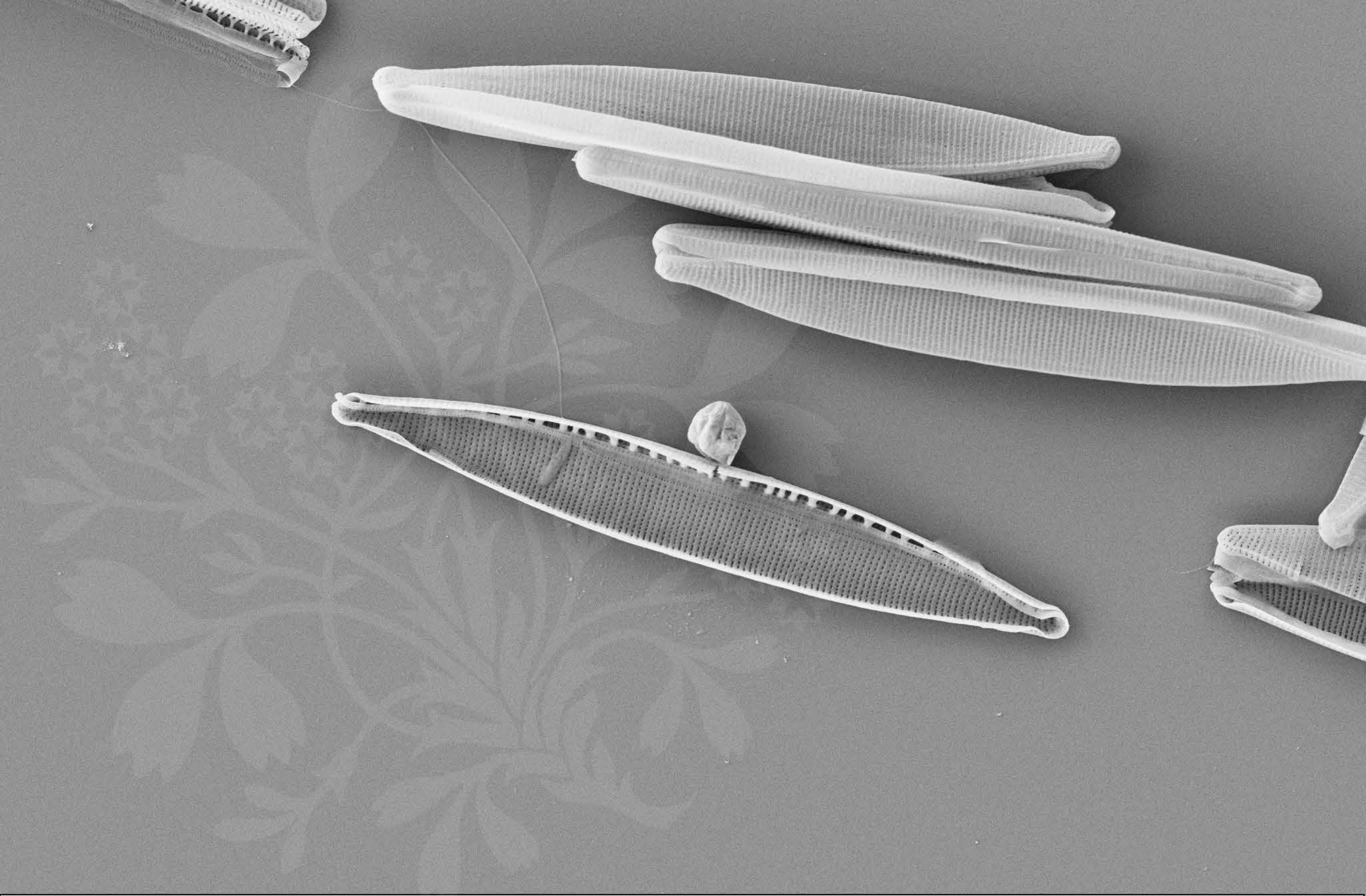
WD = 4 mm

EHT = 5.00 kV Signal A = SE2

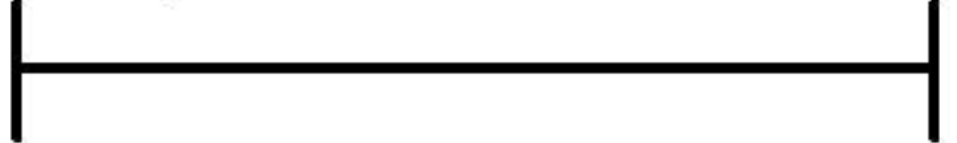
File Name = DM1011_09.tif

Date :23 Oct 2013





10 μ m



Mag = 6.00 K X

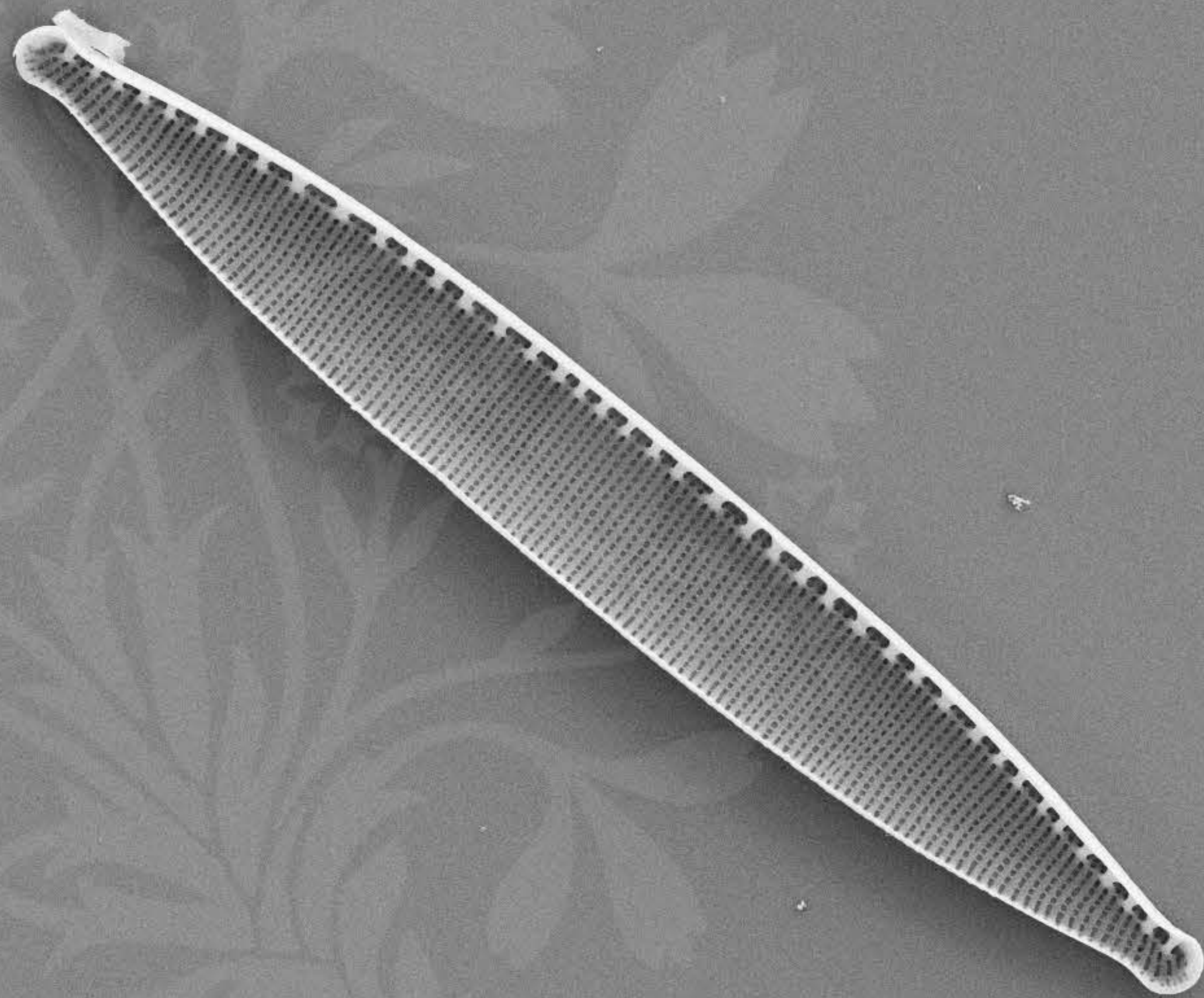
WD = 4 mm

EHT = 5.00 kV Signal A = SE2

File Name = DM1011_10.tif

Date :23 Oct 2013





10 μm

Mag = 6.00 K X

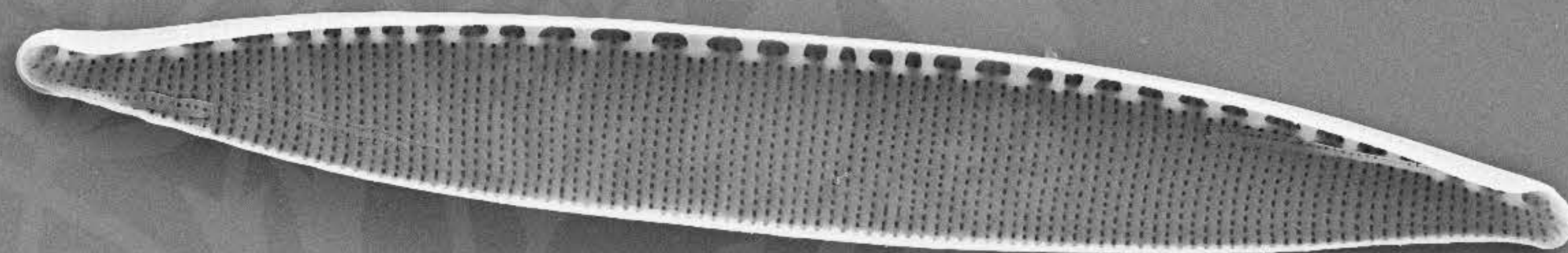
EHT = 5.00 kV Signal A = SE2

Date :23 Oct 2013

WD = 4 mm

File Name = DM1011_11.tif





10 μ m

Mag = 6.00 K X

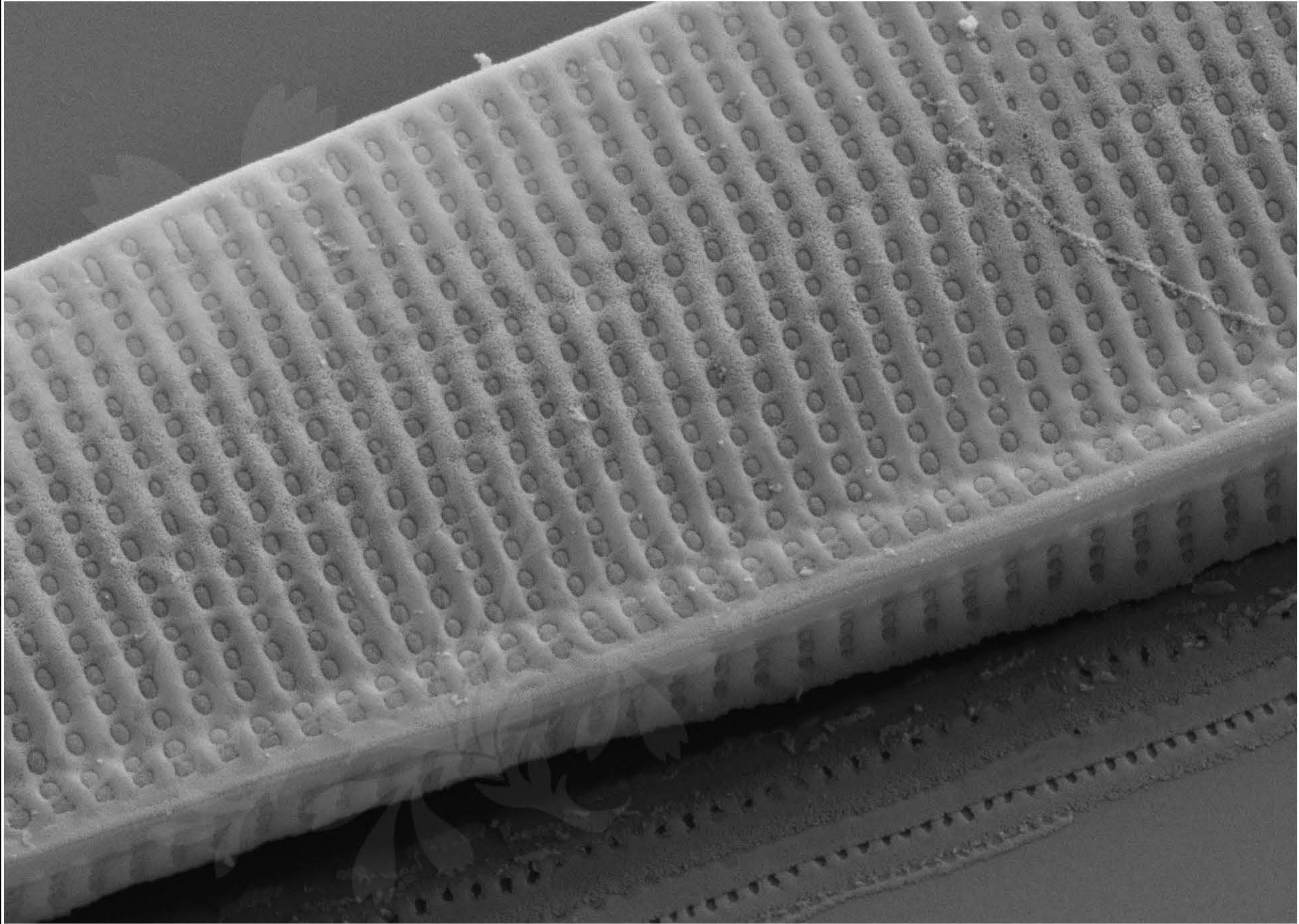
EHT = 5.00 kV Signal A = SE2

Date :23 Oct 2013

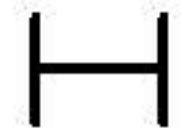
WD = 4 mm

File Name = DM1011_12.tif





200 nm



Mag = 30.00 K X

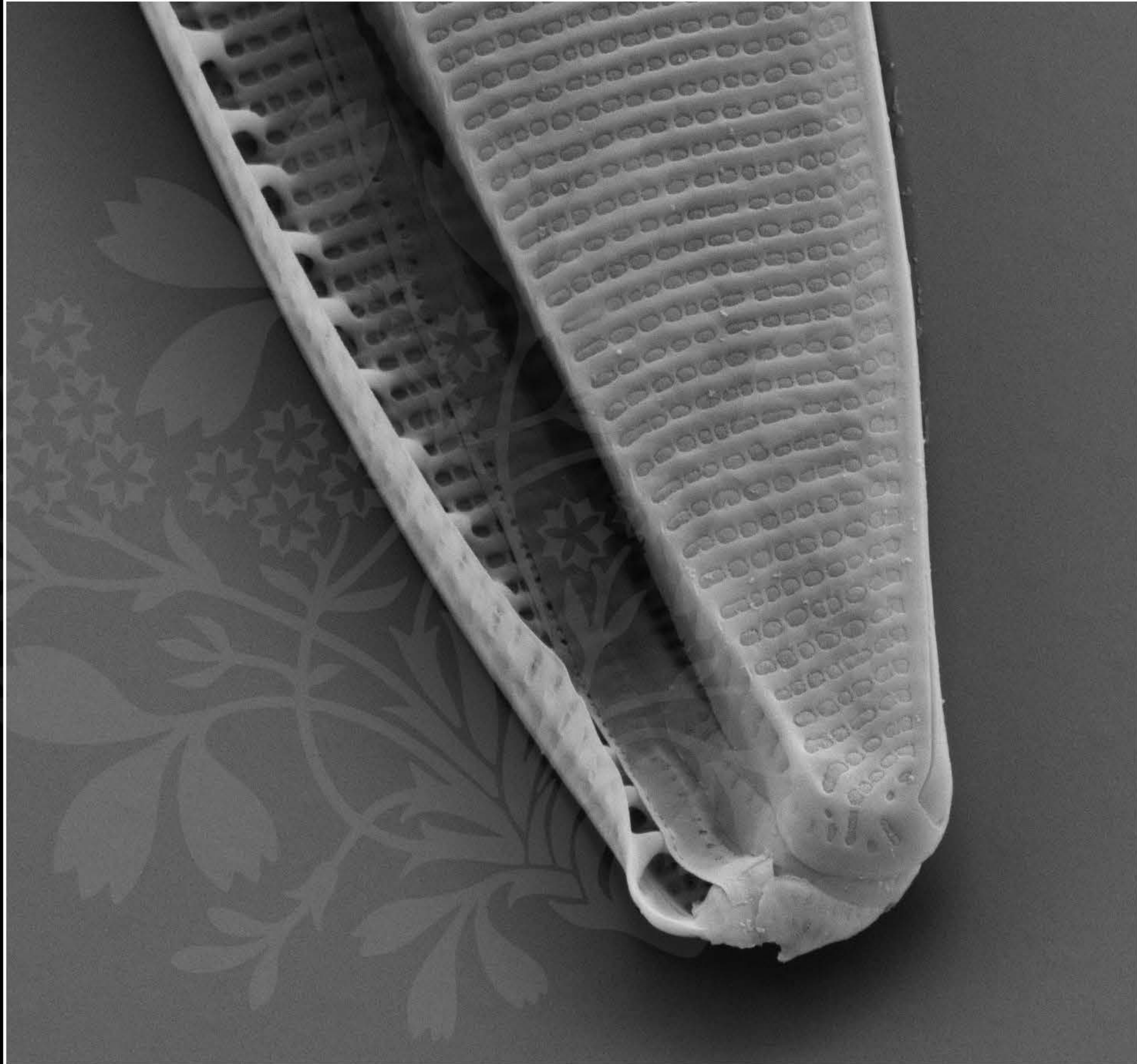
EHT = 5.00 kV

Signal A = SE2 Date :8 Oct 2018

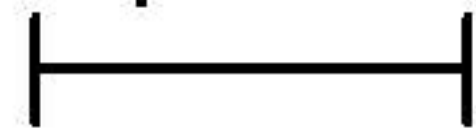
WD = 4.5 mm

File Name = DM1011_13.tif





1 μm



Mag = 20.00 K X

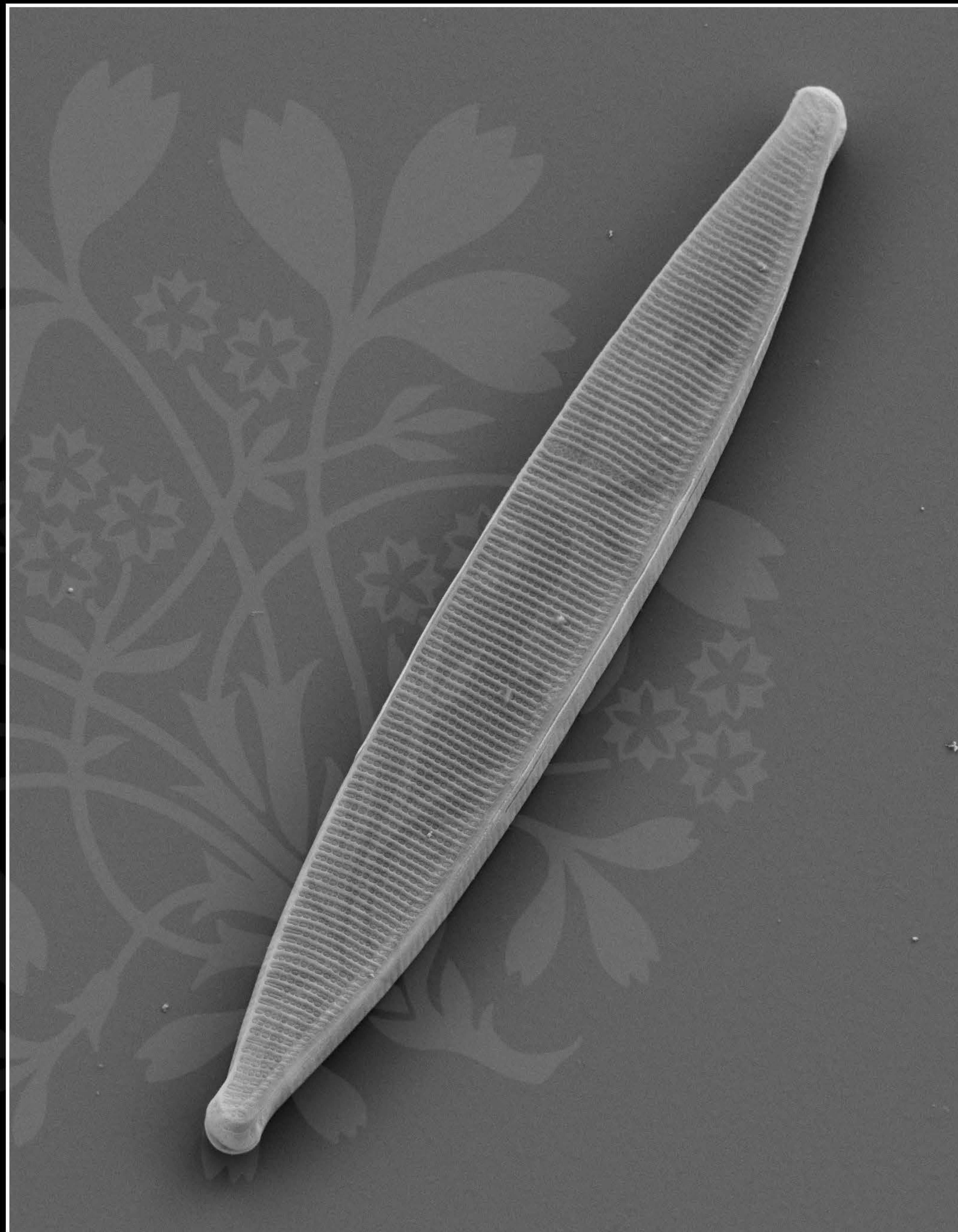
EHT = 5.00 kV

Signal A = SE2 Date :8 Oct 2018

WD = 4.4 mm

File Name = DM1011_14.tif





1 μm
H

Mag = 5.50 K X

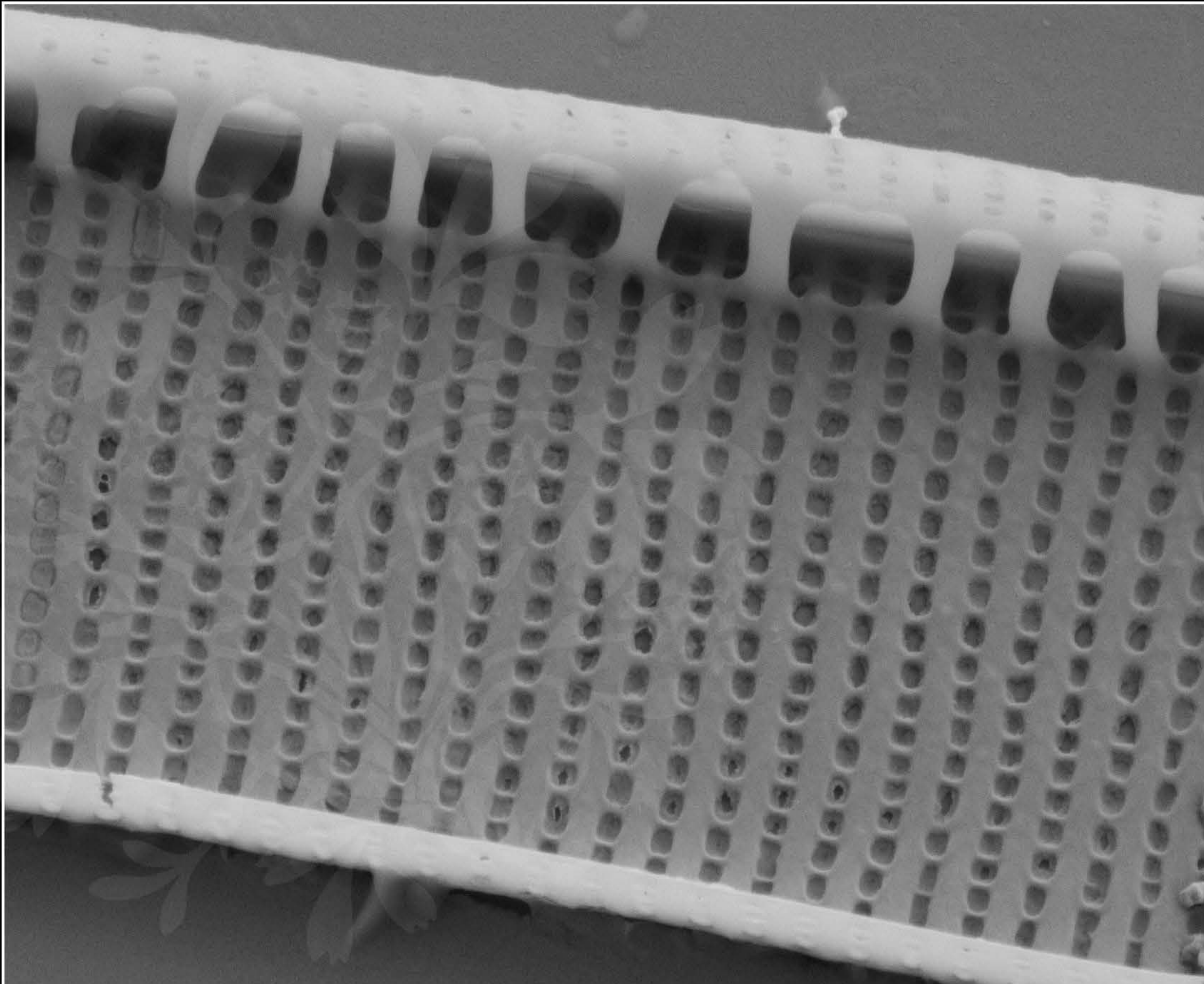
EHT = 5.00 kV

Signal A = SE2 Date :8 Oct 2018

WD = 4.4 mm

File Name = DM1011_15.tif





200 nm
H

Mag = 35.00 K X

EHT = 5.00 kV

Signal A = SE2 Date :8 Oct 2018

WD = 4.5 mm

File Name = DM1011_16.tif





1 μ m
H

Mag = 6.00 K X

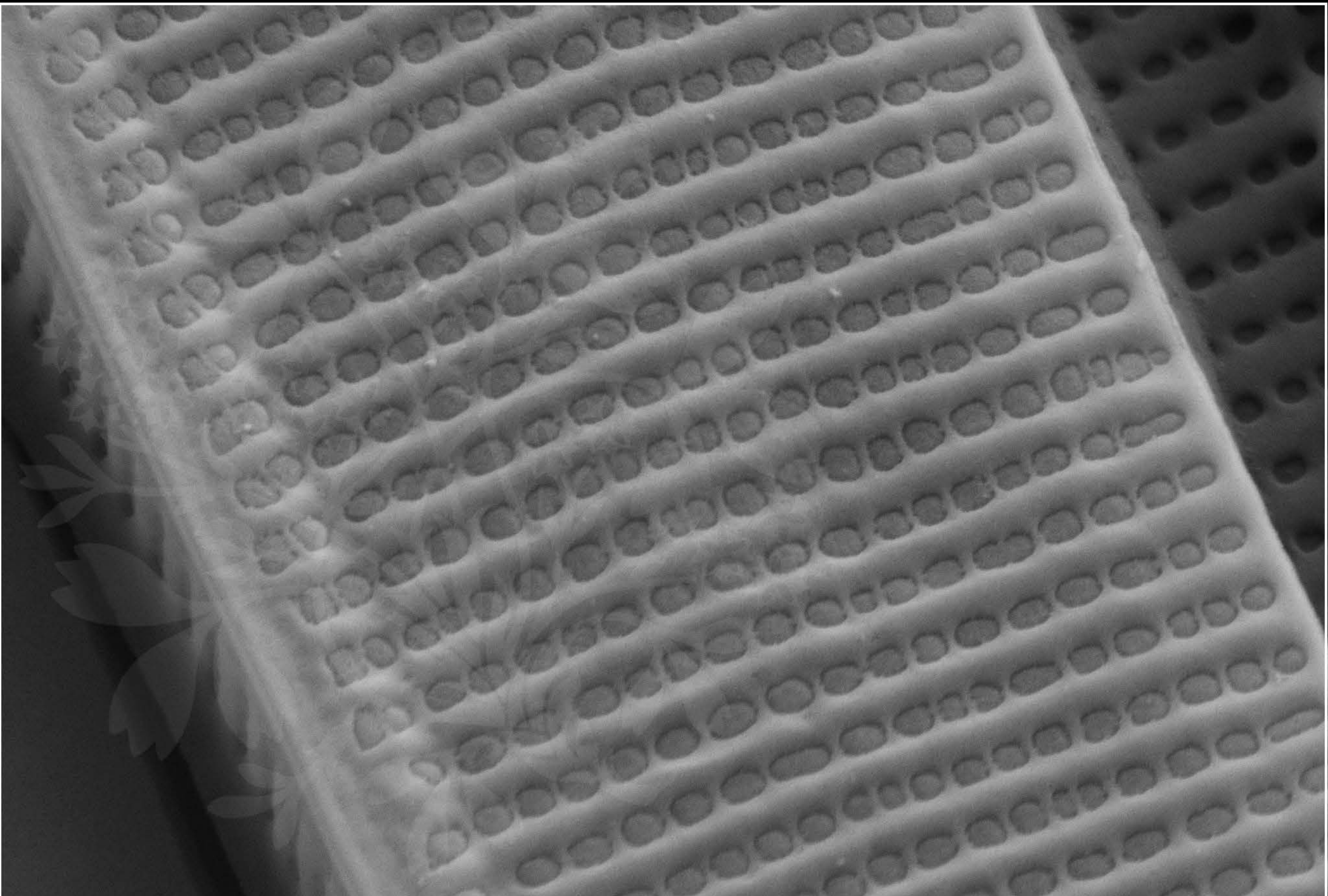
EHT = 5.00 kV

Signal A = SE2 Date :8 Oct 2018

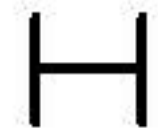
WD = 4.4 mm

File Name = DM1011_17.tif





100 nm



Mag = 50.00 K X

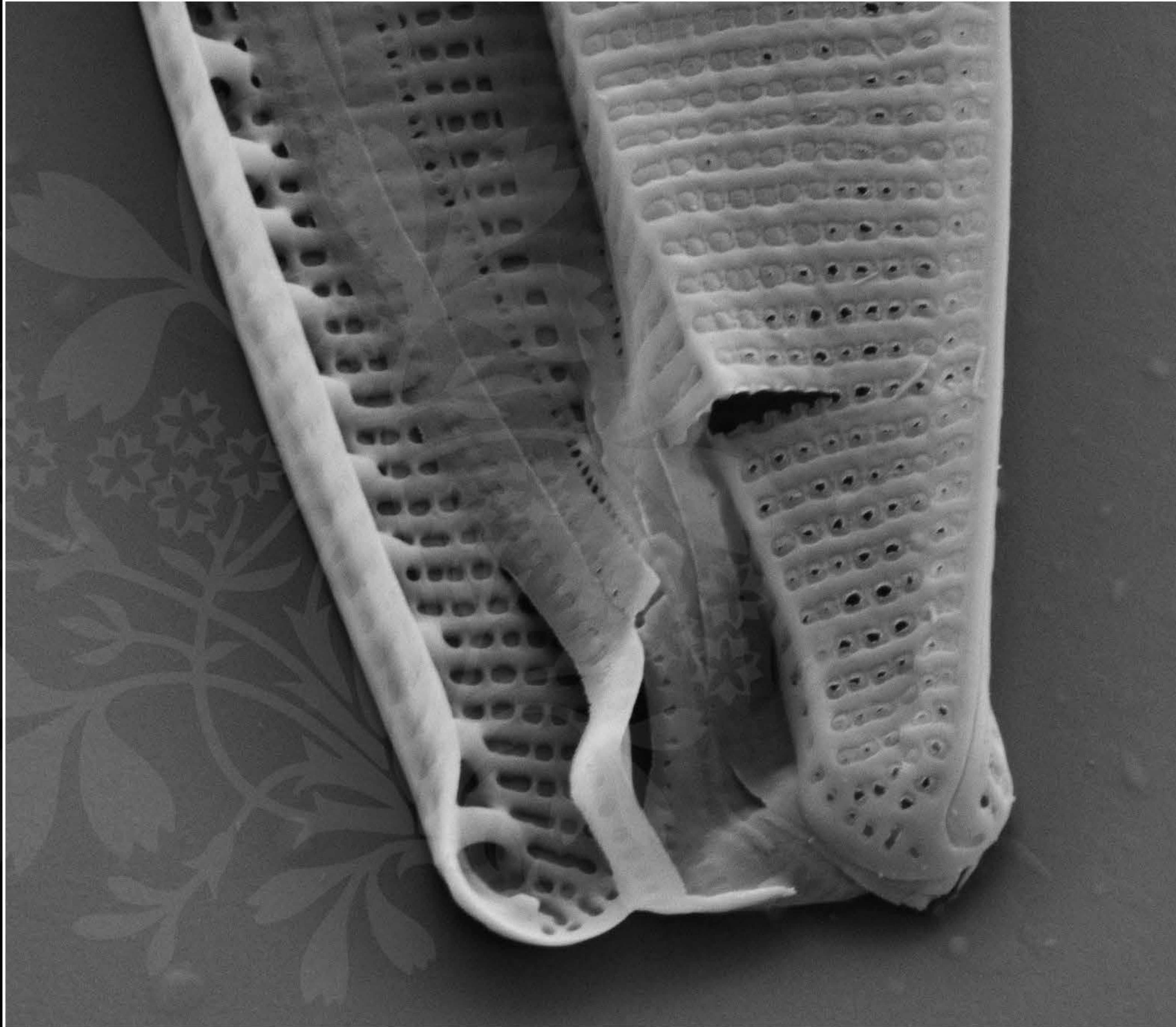
EHT = 5.00 kV

Signal A = SE2 Date :9 Oct 2018

WD = 4.5 mm

File Name = DM1011_18.tif





300 nm
┆

Mag = 25.00 K X

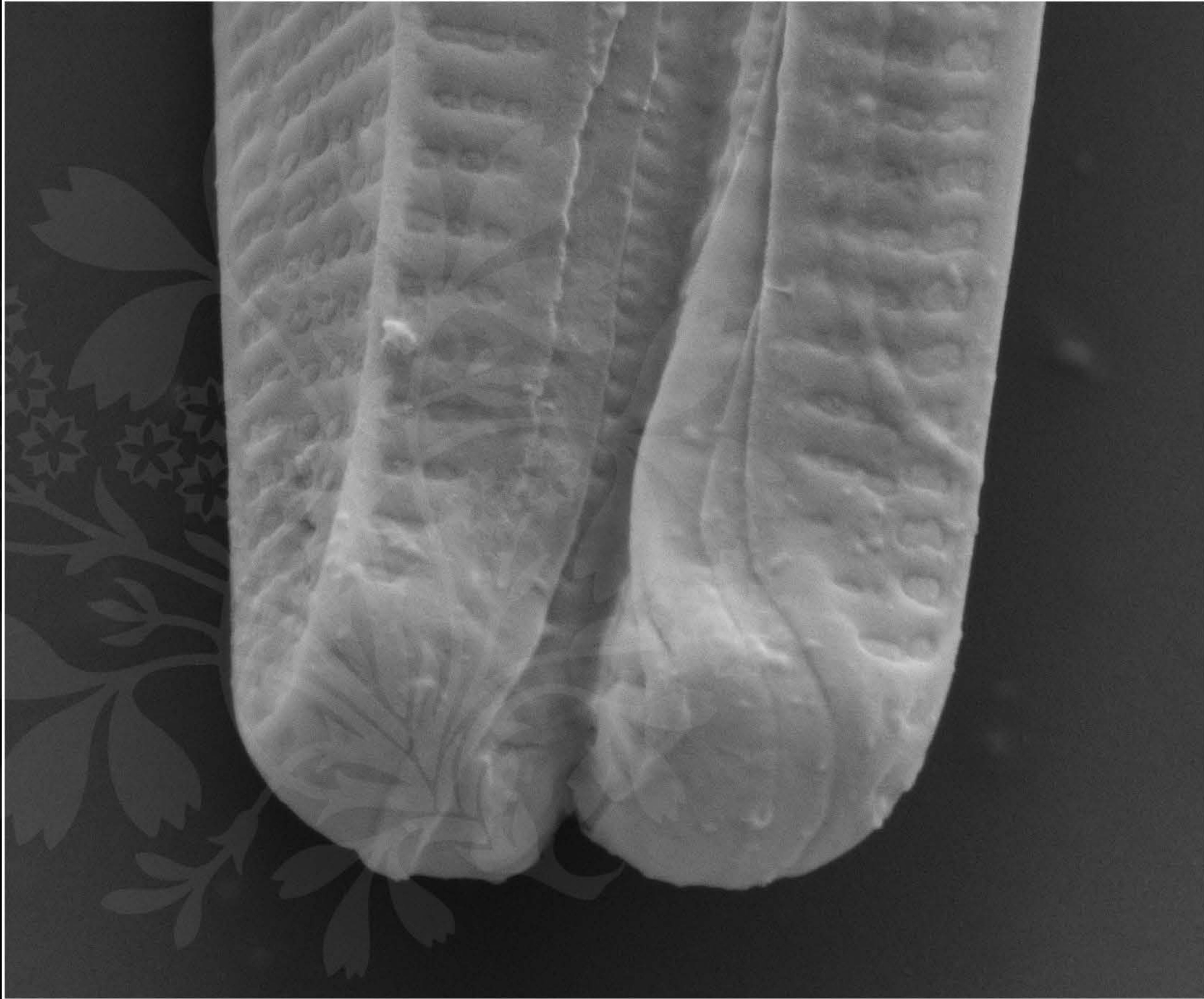
EHT = 5.00 kV

Signal A = SE2 Date :9 Oct 2018

WD = 4.4 mm

File Name = DM1011_19.tif





200 nm



Mag = 40.00 K X

EHT = 5.00 kV

Signal A = SE2 Date :9 Oct 2018

WD = 4.4 mm

File Name = DM1011_20.tif

